



**BridgeWays
Management Pack
for Oracle Database**

Product Overview

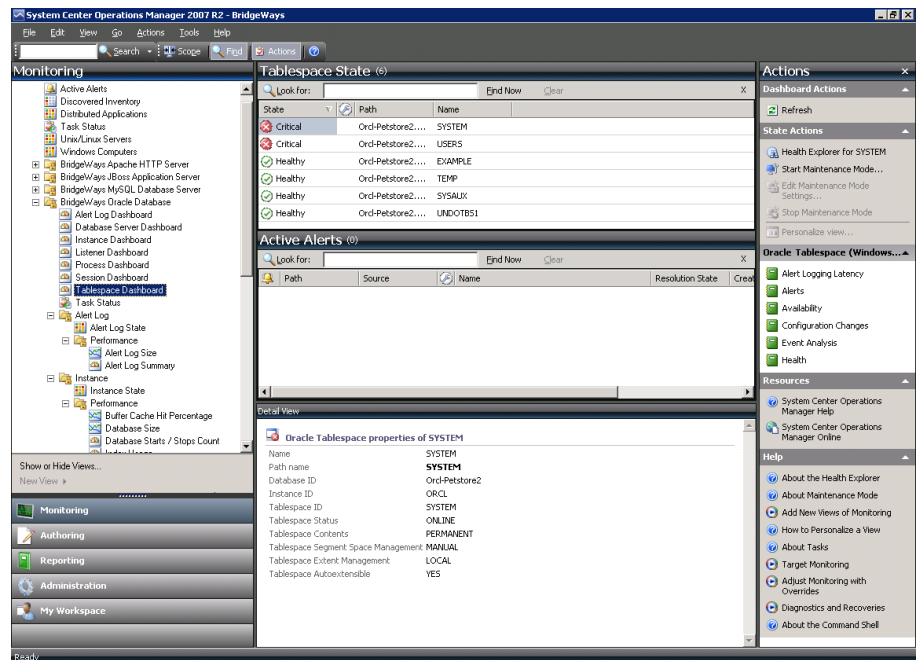
BridgeWays offers a wide selection of application management packs for Microsoft System Center Operations Manager on Windows, Linux and UNIX. These management packs leverage the native Operations Manager agents so there is no additional system to install or configure.

BENEFITS

- Manage your whole environment from a single console
- Track key performance indicators to assist with troubleshooting, optimize infrastructure performance and maximize business results
- No additional management system to learn or implement
- Eliminate the burden and cost of integrating and maintaining multiple management systems
- Apply the same best-of-breed approach with service and health models to distributed applications
- Collate data from several management packs into a single distributed application to expedite root cause analysis
- Work with a single vendor for managing a wide range of line-of-business applications

BridgeWays Management Pack for Oracle Database

Data is the lifeblood of an organization; databases are the essential repositories. Reliable, prompt storage and retrieval of the data is critical to the applications that support the various functions and processes that run the organization. Downtime or even poor performance can hinder an organization’s ability to operate, resulting in significant costs.



The BridgeWays Management Pack for Oracle Database models the application from the server down to the tablespaces providing insight into the inner workings of the instances. The data is collected in an unobtrusive manner enabling the management pack to provide the detailed information required for proper monitoring without impacting the overall performance of the system. In addition, while the management pack will leverage the Automatic Workload Repository (AWR) if available; it can also provide administrators with rate information by calculating deltas over time which helps administrators in organizations that have not licensed AWR.

Discover and monitor the individual components

- Instances
- Datafiles
- Tablespaces
- Sessions

Product Overview: BridgeWays Management Packs for Oracle Database

ABOUT BRIDGEWAYS

BridgeWays Management Packs extend Microsoft System Center Operations Manager to monitor the health and performance of business critical applications on Windows, Linux and UNIX. BridgeWays applies service and health models from a single console, minimizing the use of multiple vendors and management systems.

BridgeWays is a division of Xandros, headquartered in New York, with R&D offices in Ottawa, San Diego, Bracknell, Frankfurt, Mumbai, and Taipei and sales and support offices worldwide. For more information, please visit www.bridgeways.ca

301 Moodie Drive, Ottawa, Ontario, Canada K2H 9C4

Contact Us:

<http://www.bridgeways.ca/contact.php>

North America

TEL 1-613-842-3494

FAX 1-613-842-0455

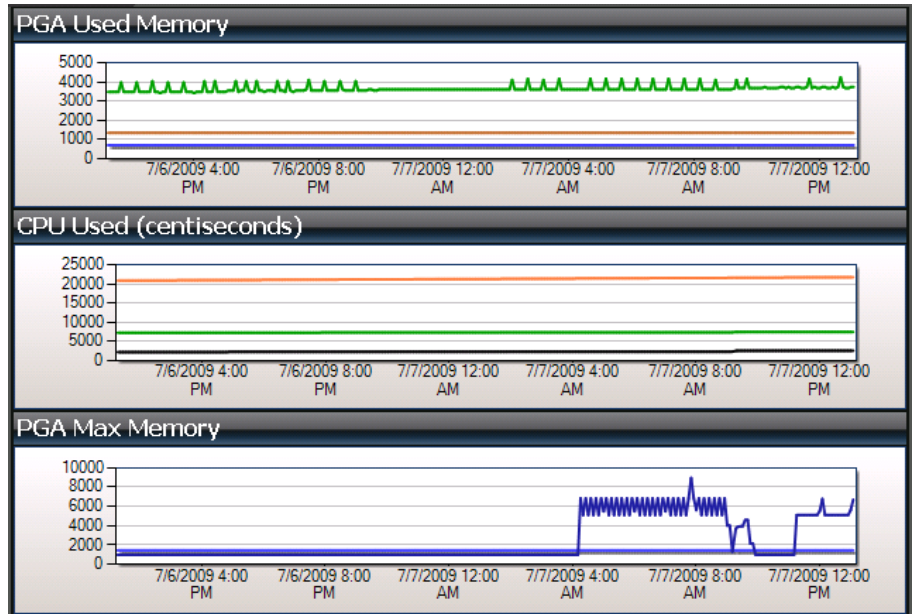
© Xandros, Inc. 2009. All rights reserved.

Xandros is a registered trademark and BridgeWays is a trademark of Xandros, Inc.

All other trademarks are the property of their respective holders

Configuration information

- Data and log file locations
- Version and patch levels
- Startup times
- Configured maximums and Timeouts



Oracle Process Summary

Monitor key performance metrics

- Data throughput
- Connection activity
- Cache hit ratios
- Active sessions and memory usage
- Commits and rollbacks
- Sorts in memory vs. sorts on disk

Reports

- Overall health of the environment
- Error summaries
- Individual instance health
- Performance summaries

The screenshot shows the BridgeWays Oracle management console. On the left is a tree view of health monitors for 'Orc1Petstore2'. The 'Performance - ORCL (Entity)' folder is expanded, showing various monitors like 'Alert Log File Performance Rollup', 'Dictionary Cache Hit Rate Monitor', and 'Memory Sort Rate Monitor'. The 'Memory Sort Rate Monitor' is selected, and its details are shown on the right.

Memory Sort Rate Monitor - ORCL (Oracle Instance (Windows))

Summary
This monitor ensures that an alert is generated when the memory sort rate percent exceeds the threshold value.

Causes
Oracle uses internal sorting for ORDER BY or GROUP BY SQL clauses, creating indexes, and other operations. The cause is that the sort area size is not large enough to do the sorts in memory.

Resolutions
Oracle recommends using the setting the PGA_AGGREGATE_TARGET, MEMORY_TARGET and SGA_TARGET to have Oracle use automatic memory management. When setting automatic memory management Oracle will adjust sort areas dynamically. If you do not wish to have your database using automatic storage, see your database administrator to resize the SGA and associated memory pools.

BridgeWays Oracle